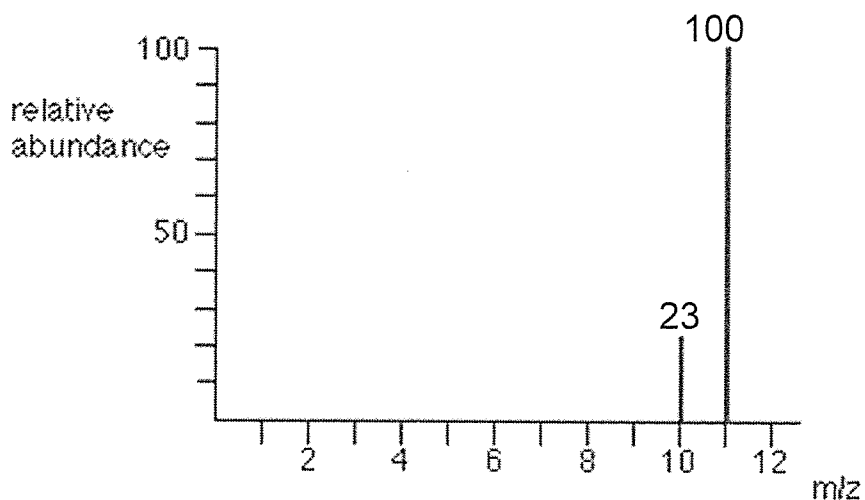


Isotope problem

- Given the information in the mass spectrum below:
 - Calculate the relative percentage abundance of each of the isotopes.
 - Calculate the atomic mass of the element
 - Using the information from (b) identify the element.
 - Explain why the mass /charge ratio in most cases is the same as the mass of the isotope.



- Given the information in the mass spectrum below:
 - Calculate the relative percentage abundance of each of the isotopes.
 - Calculate the relative atomic mass of the strontium sample

